

Matte white plus size mannequin 42/44 250.00 €Ex VAT

Plus size mannequins



FEATURES

| | |
|--------------------------|----------------------|
| Brand | Mannequins vitrine |
| Base | Round glass |
| Fitting | Calf |
| Color | Blanc |
| Ref | man-fem-gra-3993 |
| ID | 3993 |
| Delivery schedule | 1-5 working days |
| Category | Plus size mannequins |
| Type | Mannequins |

DETAIL

Features: Pure White Finish : The white colour provides a neutral canvas, highlighting the colour and design of each outfit. Size: Ideally proportioned to enhance garments in sizes 42-44.

DESCRIPTION

Present your designs with elegance and inclusivity with our **Women's Mannequin Large Size** in Matte White, **size 42-44**. With realistic dimensions and a matte finish, this mannequin offers an authentic representation of outfits, ideal for showcasing a variety of sartorial styles. **Dimensions:**

- Length: 180 cm
- Shoulders: 46 cm
- Chest: 101 cm
- Waist: 80 cm
- Packaging content:
 - 1 x Mannequin Woman Large Size Matte White
 - 1 x Round glass base

Matte white plus size mannequin 42/44

Plus size mannequins - Photo n° 1



FEATURES

| | |
|-------------------|----------------------|
| Brand | Mannequins vitrine |
| Base | Round glass |
| Fitting | Calf |
| Color | Blanc |
| Ref | man-fem-gra-3993 |
| ID | 3993 |
| Delivery schedule | 1-5 working days |
| Category | Plus size mannequins |
| Type | Mannequins |

DETAIL

Features: Pure White Finish : The white colour provides a neutral canvas, highlighting the colour and design of each outfit. Size: Ideally proportioned to enhance garments in sizes 42-44.

Matte white plus size mannequin 42/44

Plus size mannequins - Photo n° 2



FEATURES

| | |
|--------------------------|----------------------|
| Brand | Mannequins vitrine |
| Base | Round glass |
| Fitting | Calf |
| Color | Blanc |
| Ref | man-fem-gra-3993 |
| ID | 3993 |
| Delivery schedule | 1-5 working days |
| Category | Plus size mannequins |
| Type | Mannequins |

DETAIL

Features: Pure White Finish : The white colour provides a neutral canvas, highlighting the colour and design of each outfit. Size: Ideally proportioned to enhance garments in sizes 42-44.

Matte white plus size mannequin 42/44

Plus size mannequins - Photo n° 3





FEATURES

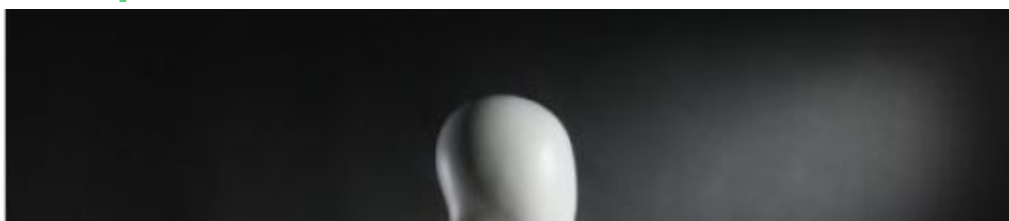
| | |
|--------------------------|----------------------|
| Brand | Mannequins vitrine |
| Base | Round glass |
| Fitting | Calf |
| Color | Blanc |
| Ref | man-fem-gra-3993 |
| ID | 3993 |
| Delivery schedule | 1-5 working days |
| Category | Plus size mannequins |
| Type | Mannequins |

DETAIL

Features: Pure White Finish : The white colour provides a neutral canvas, highlighting the colour and design of each outfit. Size: Ideally proportioned to enhance garments in sizes 42-44.

Matte white plus size mannequin 42/44

Plus size mannequins - Photo n° 4





FEATURES

| | |
|--------------------------|----------------------|
| Brand | Mannequins vitrine |
| Base | Round glass |
| Fitting | Calf |
| Color | Blanc |
| Ref | man-fem-gra-3993 |
| ID | 3993 |
| Delivery schedule | 1-5 working days |
| Category | Plus size mannequins |
| Type | Mannequins |

DETAIL

Features: Pure White Finish : The white colour provides a neutral canvas, highlighting the colour and design of each outfit. Size: Ideally proportioned to enhance garments in sizes 42-44.

Matte white plus size mannequin 42/44

Plus size mannequins - Photo n° 5





FEATURES

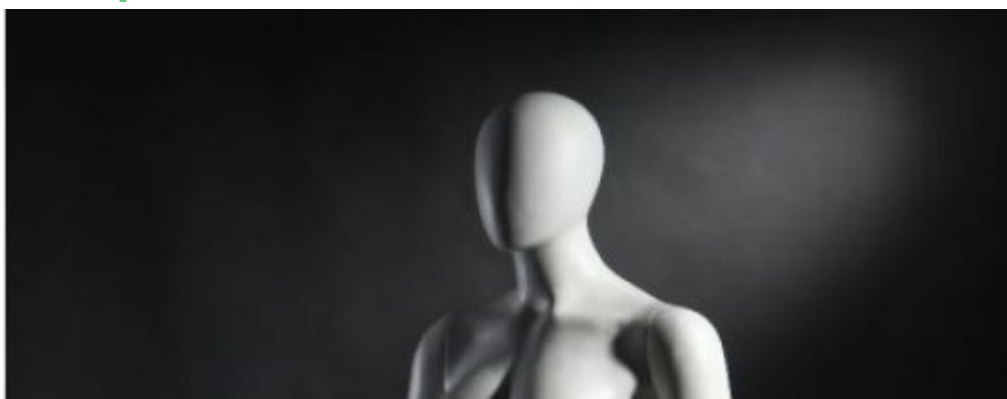
| | |
|--------------------------|--------------------------|
| Brand | Mannequins vitrine |
| Base | Round glass |
| Fitting | Calf |
| Color | Blanc |
| Ref ID | man-fem-gra-3993 3993 |
| Delivery schedule | 1-5 working days |
| Category | Plus size mannequins |
| Type | Mannequins |

DETAIL

Features: Pure White Finish : The white colour provides a neutral canvas, highlighting the colour and design of each outfit. Size: Ideally proportioned to enhance garments in sizes 42-44.

Matte white plus size mannequin 42/44

Plus size mannequins - Photo n° 6





FEATURES

| | |
|--------------------------|----------------------|
| Brand | Mannequins vitrine |
| Base | Round glass |
| Fitting | Calf |
| Color | Blanc |
| Ref | man-fem-gra-3993 |
| ID | 3993 |
| Delivery schedule | 1-5 working days |
| Category | Plus size mannequins |
| Type | Mannequins |

DETAIL

Features: Pure White Finish : The white colour provides a neutral canvas, highlighting the colour and design of each outfit. Size: Ideally proportioned to enhance garments in sizes 42-44.