



Matte white plus size woman's mannequin size 42-44

Plus size mannequins

250.00 €Ex VAT



FEATURES

Brand	Mannequins vitrine
Base	Round glass
Fitting	Calf
Color	Blanc
Ref	man-fem-gra-3928
ID	3928
Delivery schedule	1-5 working days
Category	Plus size mannequins
Type	Mannequins

DETAIL

Features:

- Dynamic pose: The hand positioned on the hip adds a touch of dynamism to the woman model, enhancing figure and confidence.
- Pure White finish: The white colour offers a neutral canvas, highlighting the colour and design of each outfit.
- Size: Ideally proportioned to showcase garments in sizes 42-44.

DESCRIPTION

Express plus size fashion with our white matte female plus size model, size 42-44, adopting a dynamic pose with her hand on her hip. This realistic representation showcases confidence and a diversity of clothing styles. **Dimensions:**

- Length: 180 cm
 - Shoulders: 46 cm
 - Chest: 101 cm
 - Waist: 80 cm
 - Hips: 107 cm
- Packaging content:
- 1 x Female Mannequin Large Size White Matte
 - 1 x Round Glass Base

• hips: 107 cm

Matte white plus size woman's mannequin size 42-44

Plus size mannequins - Photo n° 1



FEATURES

Brand	Mannequins vitrine
Base	Round glass
Fitting	Calf
Color	Blanc
Ref	man-fem-gra-3928
ID	3928
Delivery schedule	1-5 working days
Category	Plus size mannequins
Type	Mannequins

DETAIL

Features:

- Dynamic pose: The hand positioned on the hip adds a touch of dynamism to the woman model, enhancing figure and confidence.
- Pure White finish: The white colour offers a neutral canvas, highlighting the colour and design of each outfit.
- Size: Ideally proportioned to showcase garments in sizes 42-44.

Matte white plus size woman's mannequin size 42-44

Plus size mannequins - Photo n° 2



FEATURES

Brand	Mannequins vitrine
Base	Round glass
Fitting	Calf
Color	Blanc
Ref	man-fem-gra-3928
ID	3928
Delivery schedule	1-5 working days
Category	Plus size mannequins
Type	Mannequins

DETAIL

Features:

- Dynamic pose: The hand positioned on the hip adds a touch of dynamism to the woman model, enhancing figure and confidence.
- Pure White finish: The white colour offers a neutral canvas, highlighting the colour and design of each outfit.
- Size: Ideally proportioned to showcase garments in sizes 42-44.

Matte white plus size woman's mannequin size 42-44

Plus size mannequins - Photo n° 3



FEATURES

Brand	Mannequins vitrine
Base	Round glass
Fitting	Calf
Color	Blanc
Ref	man-fem-gra-3928
ID	3928
Delivery schedule	1-5 working days
Category	Plus size mannequins
Type	Mannequins

DETAIL

Features:

- Dynamic pose: The hand positioned on the hip adds a touch of dynamism to the woman model, enhancing figure and confidence.
- Pure White finish: The white colour offers a neutral canvas, highlighting the colour and design of each outfit.
- Size: Ideally proportioned to showcase garments in sizes 42-44.

Matte white plus size woman's mannequin size 42-44

Plus size mannequins - Photo n° 4





FEATURES

Brand	Mannequins vitrine
Base	Round glass
Fitting	Calf
Color	Blanc
Ref	man-fem-gra-3928
ID	3928
Delivery schedule	1-5 working days
Category	Plus size mannequins
Type	Mannequins

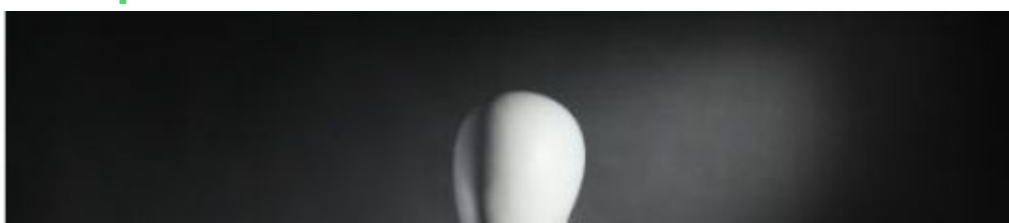
DETAIL

Features:

- **Dynamic pose:** The hand positioned on the hip adds a touch of dynamism to the woman model, enhancing figure and confidence.
- **Pure White finish:** The white colour offers a neutral canvas, highlighting the colour and design of each outfit.
- **Size:** Ideally proportioned to showcase garments in sizes 42-44.

Matte white plus size woman's mannequin size 42-44

Plus size mannequins - Photo n° 5





FEATURES

Brand	Mannequins vitrine
Base	Round glass
Fitting	Calf
Color	Blanc
Ref	man-fem-gra-3928
ID	3928
Delivery schedule	1-5 working days
Category	Plus size mannequins
Type	Mannequins

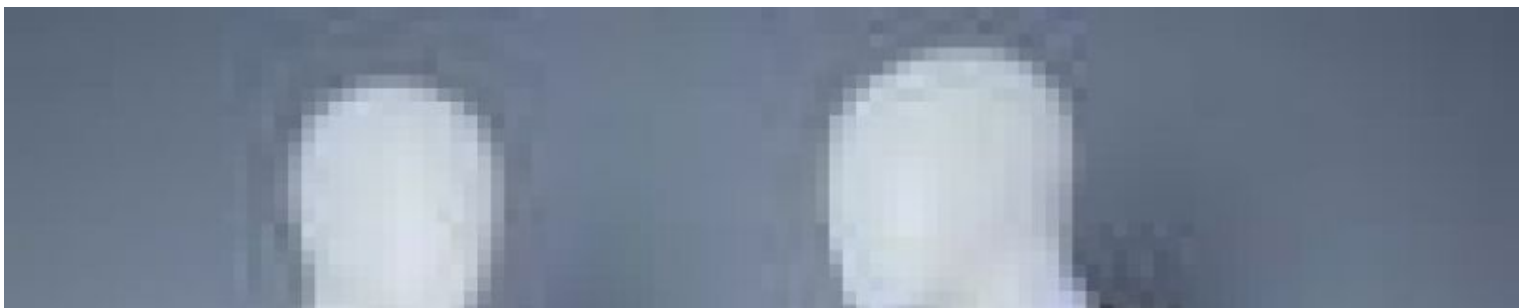
DETAIL

Features:

- Dynamic pose: The hand positioned on the hip adds a touch of dynamism to the woman model, enhancing figure and confidence.
- Pure White finish: The white colour offers a neutral canvas, highlighting the colour and design of each outfit.
- Size: Ideally proportioned to showcase garments in sizes 42-44.

Matte white plus size woman's mannequin size 42-44

Plus size mannequins - Photo n° 6





FEATURES

Brand	Mannequins vitrine
Base	Round glass
Fitting	Calf
Color	Blanc
Ref	man-fem-gra-3928
ID	3928
Delivery schedule	1-5 working days
Category	Plus size mannequins
Type	Mannequins

DETAIL

Features:

- Dynamic pose: The hand positioned on the hip adds a touch of dynamism to the woman model, enhancing figure and confidence.
- Pure White finish: The white colour offers a neutral canvas, highlighting the colour and design of each outfit.
- Size: Ideally proportioned to showcase garments in sizes 42-44.

Matte white plus size woman's mannequin size 42-44

Plus size mannequins - Photo n° 7





FEATURES

Brand	Mannequins vitrine
Base	Round glass
Fitting	Calf
Color	Blanc
Ref ID	man-fem-gra-3928 3928
Delivery schedule	1-5 working days
Category	Plus size mannequins
Type	Mannequins

DETAIL

Features:

- Dynamic pose: The hand positioned on the hip adds a touch of dynamism to the woman model, enhancing figure and confidence.
- Pure White finish: The white colour offers a neutral canvas, highlighting the colour and design of each outfit.
- Size: Ideally proportioned to showcase garments in sizes 42-44.